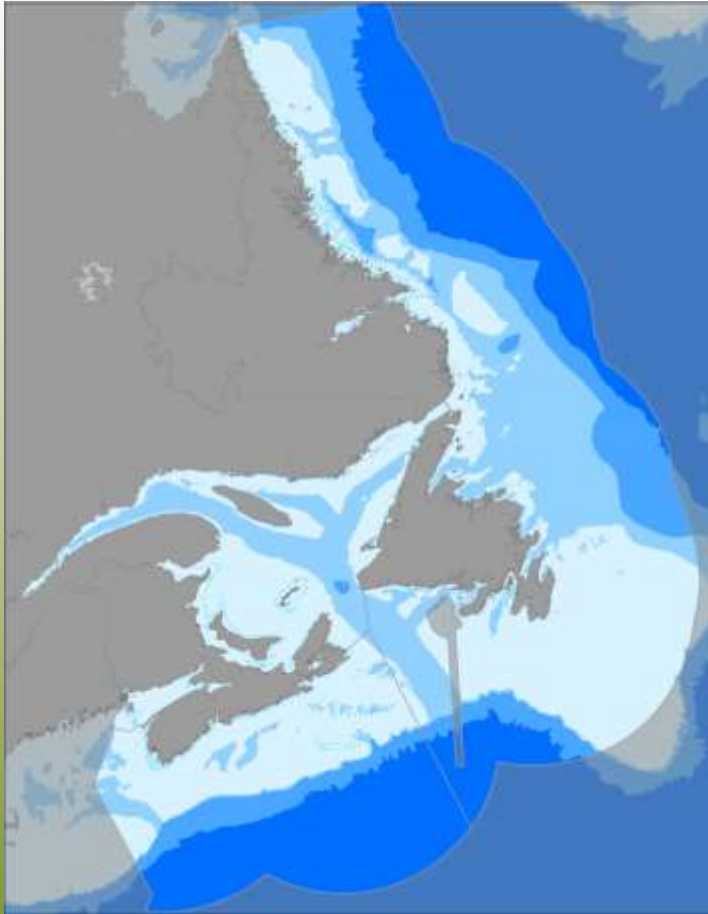




Environment  
Canada

Environnement  
Canada



# Important Marine Areas for Migratory Birds in Eastern Canada

**Karel Allard**

**Matt Mahoney**

**Al Hanson**

**Canadian Wildlife Service**

*29 May, 2013*



# Project objectives

---

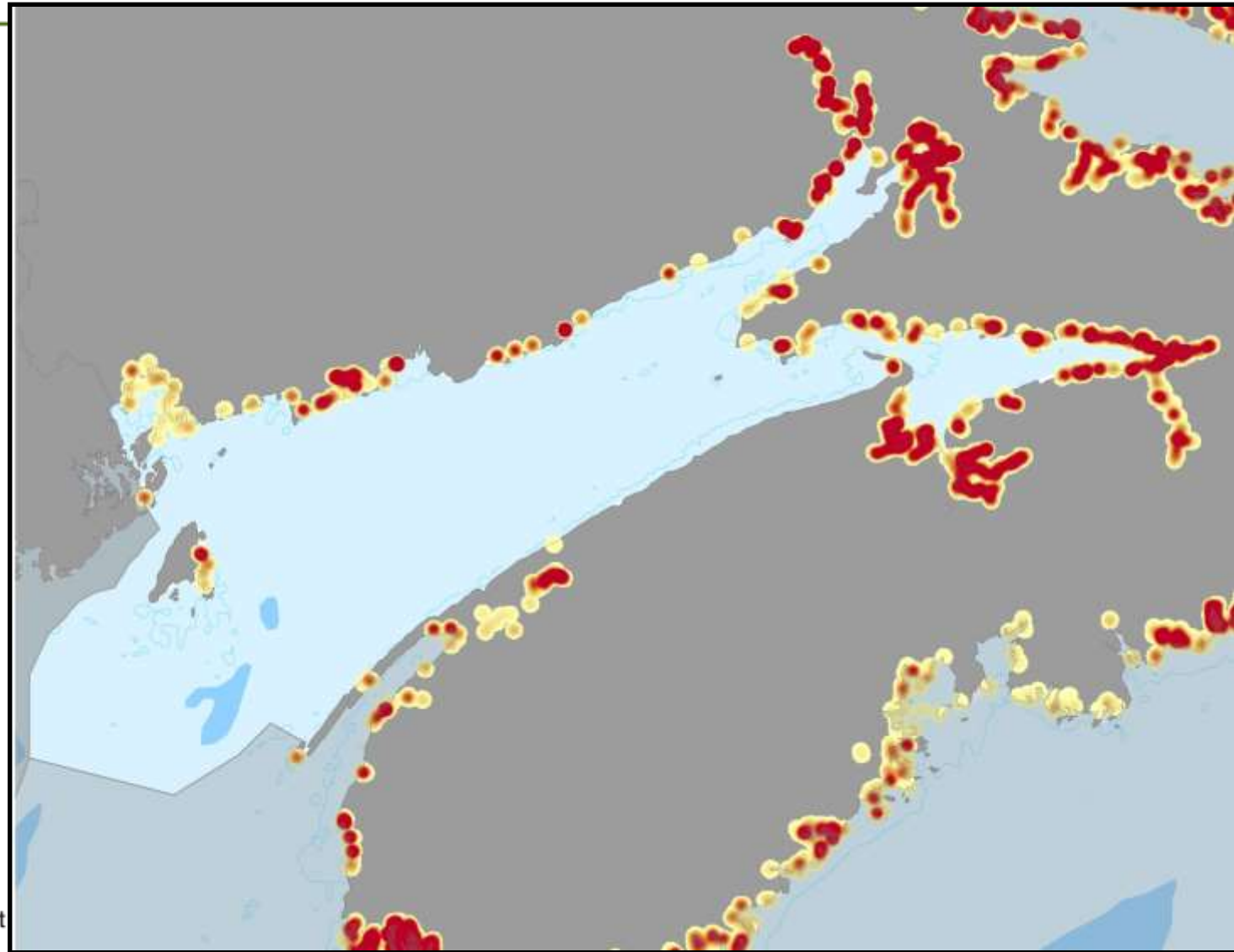
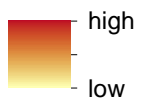
- Inventory of data sources
- Integrate data (species, surveys, habitats, jurisdictions)
- Create distribution and relative abundance maps
- Highlight monitoring gaps (species / temporal / spatial)
- Identify important sites (species, habitats)
- Provide best available information to marine planners



# Habitat

Salt Marsh

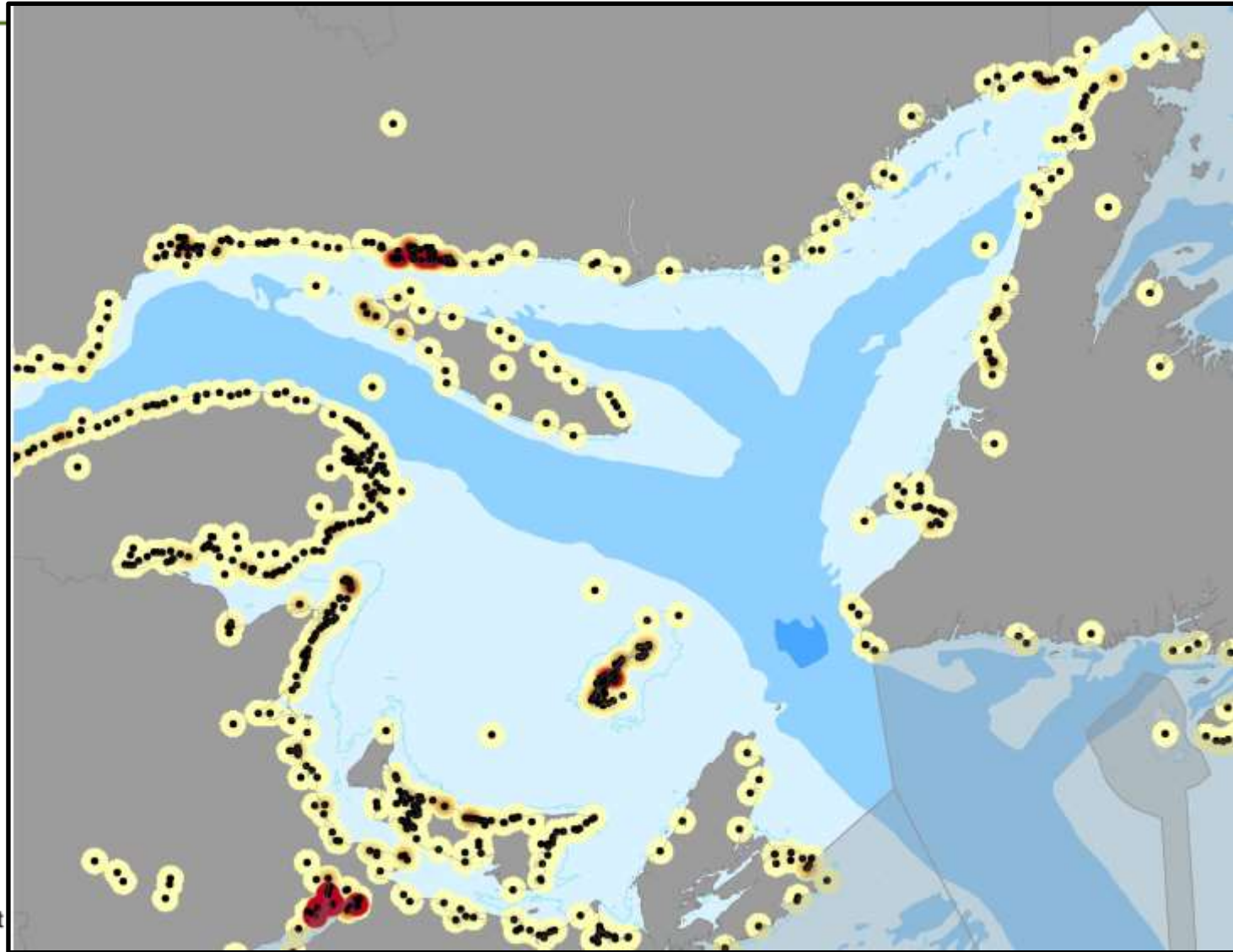
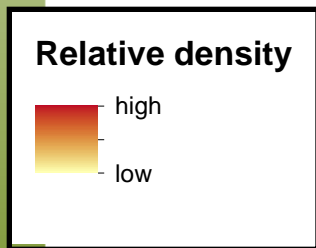
Relative density



Environment  
Canada

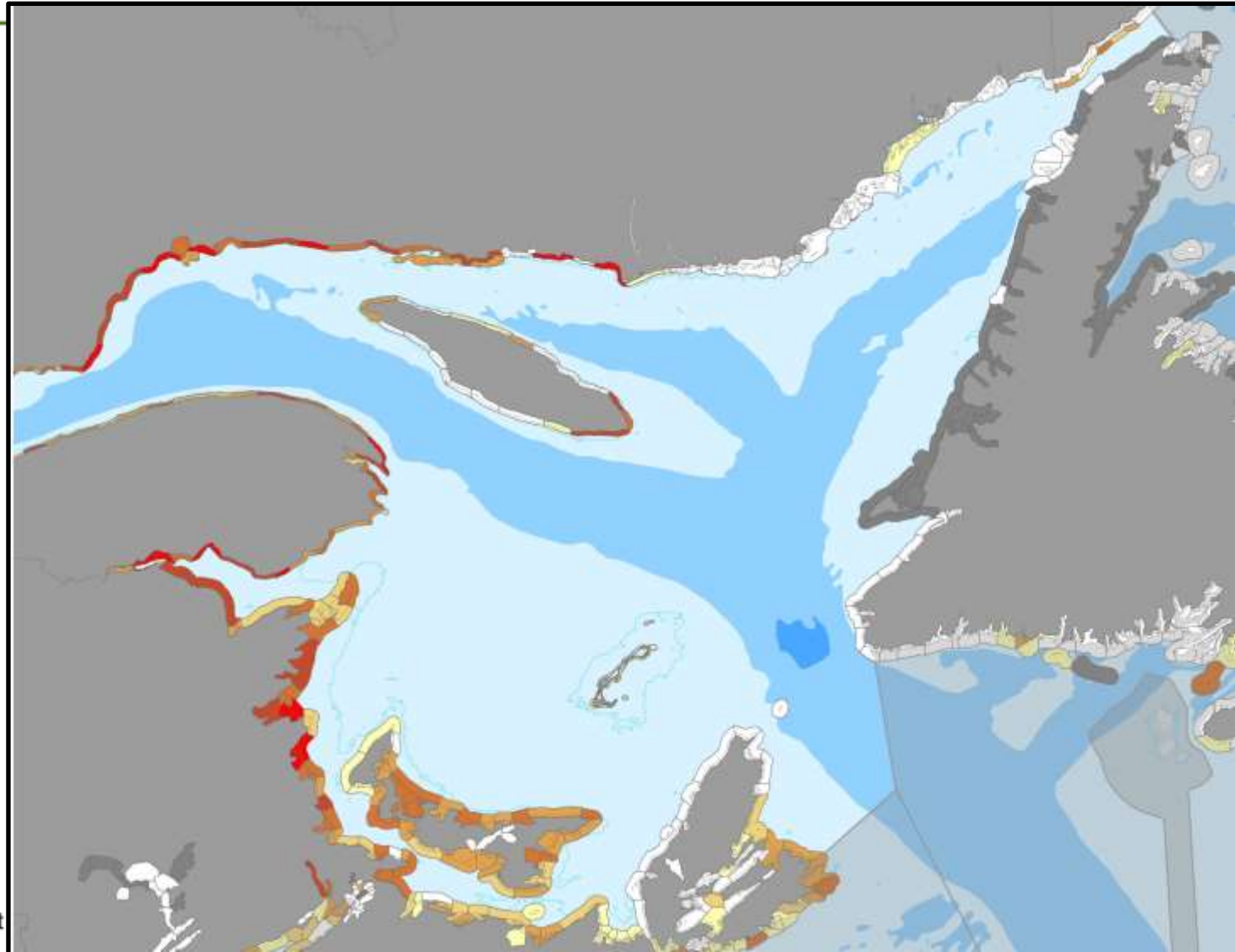
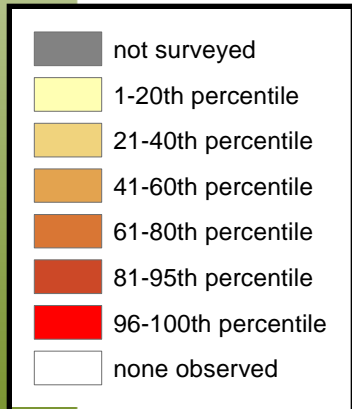
# Shorebirds

Densities



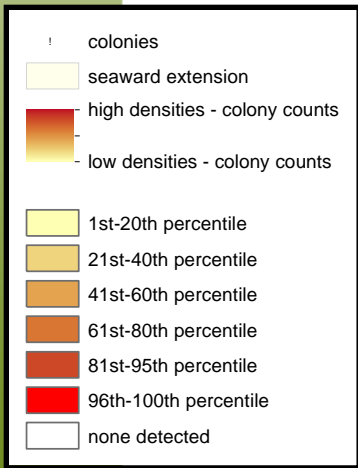
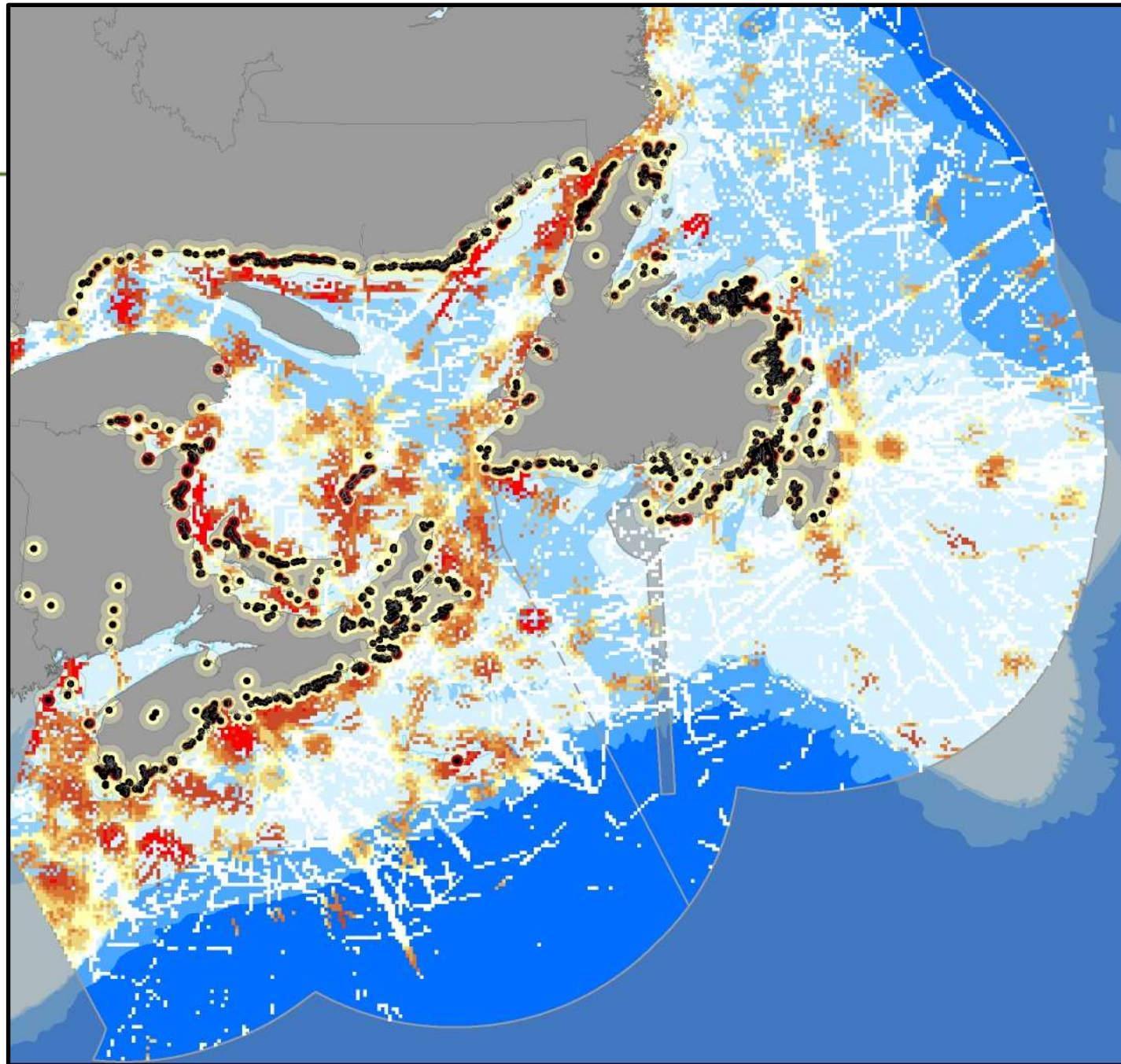
# Waterfowl

## Scoters



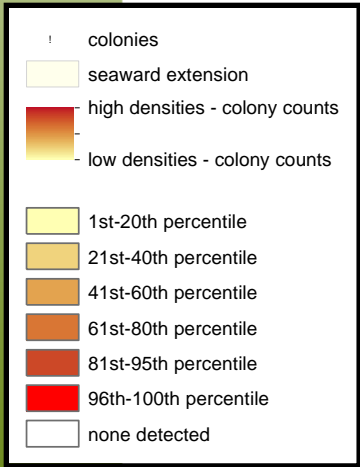
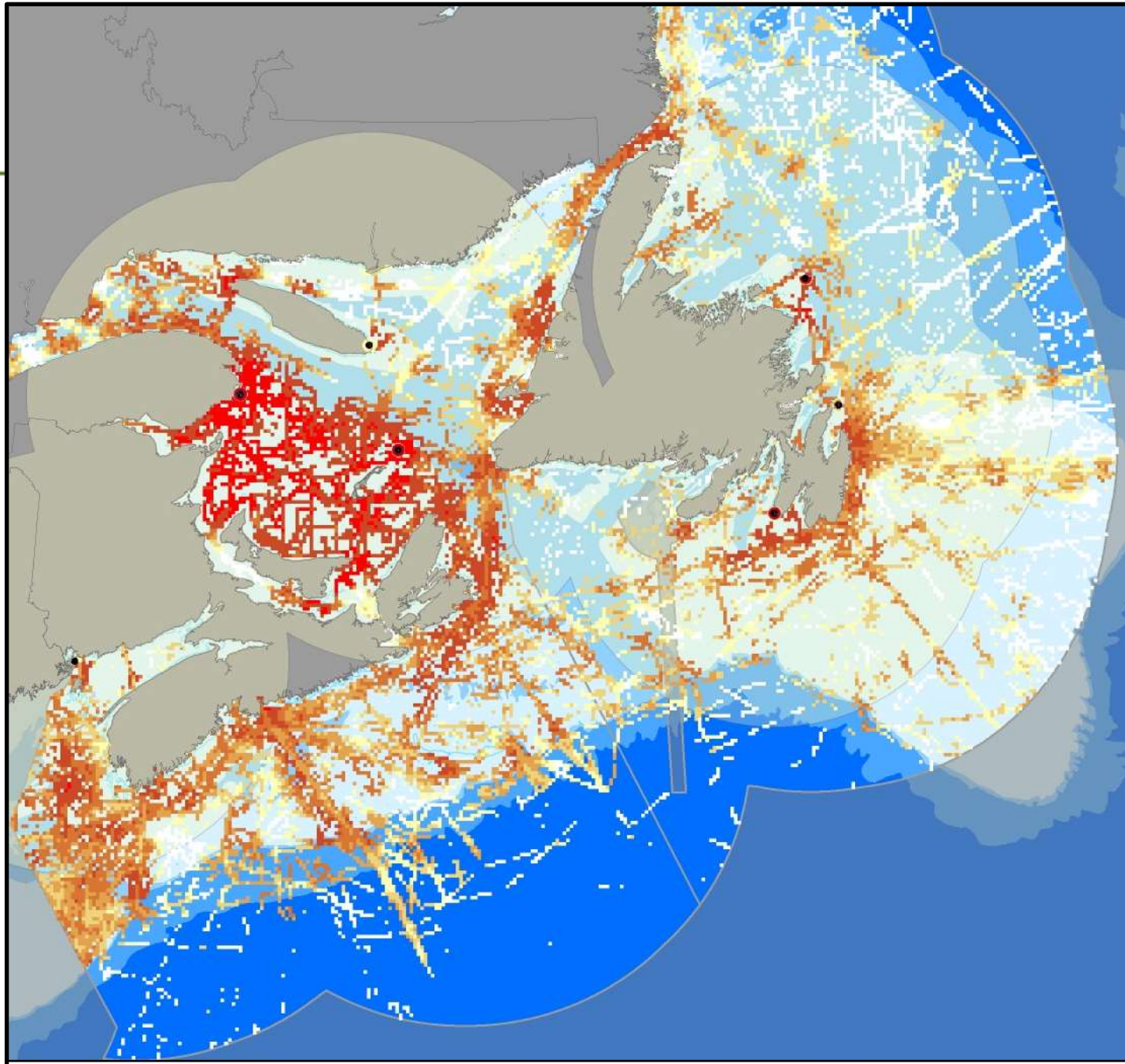
# Terns

## Common and Arctic Tern



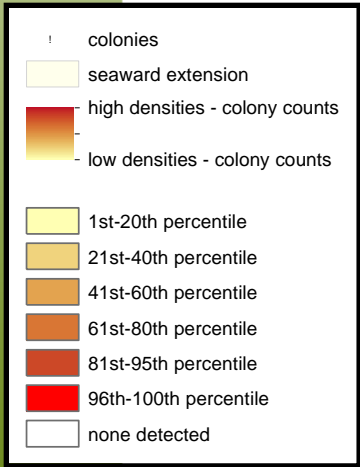
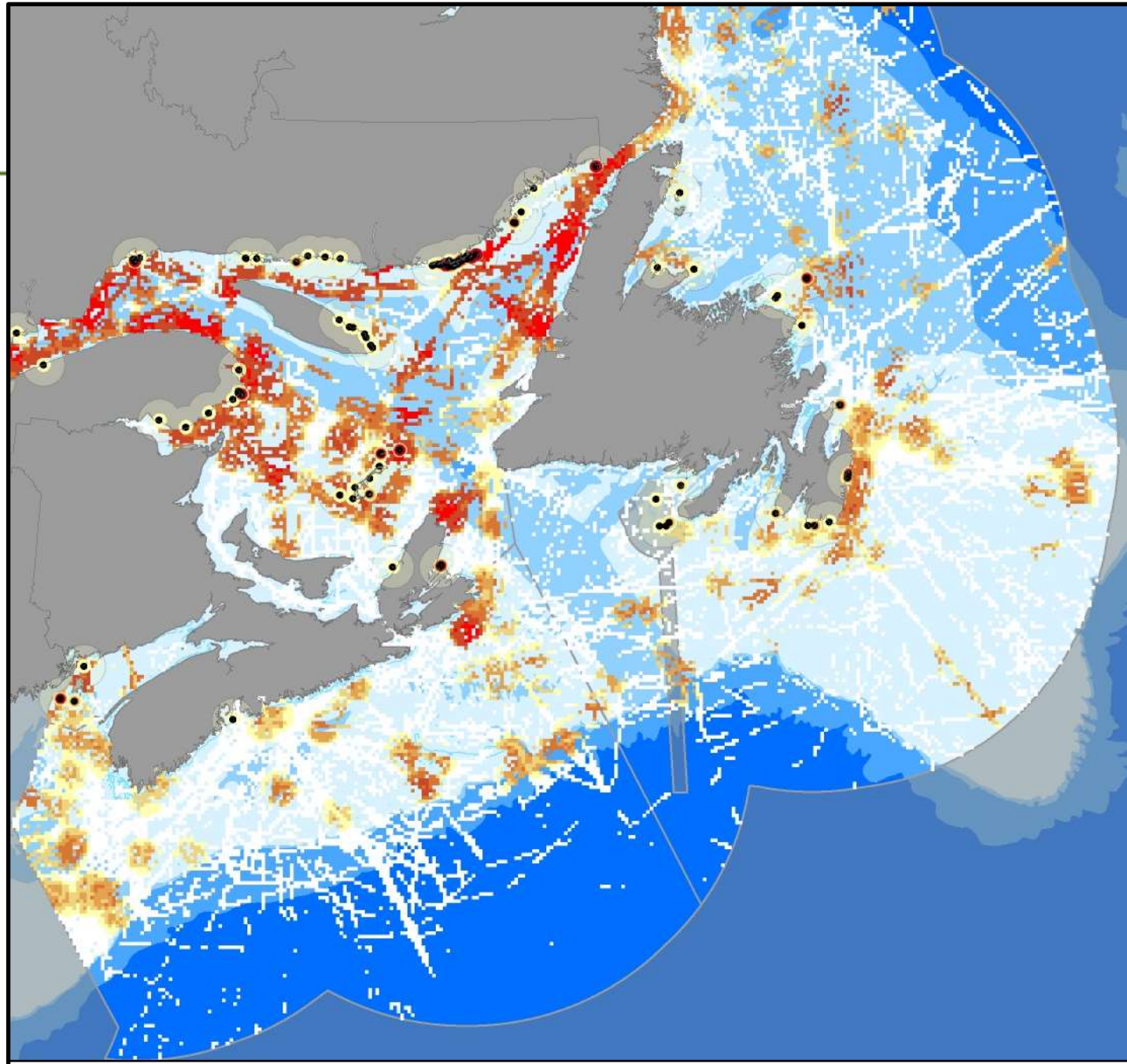
# NOGA

## Northern Gannet



# RAZO

## Razorbill





# Informed conservation planning

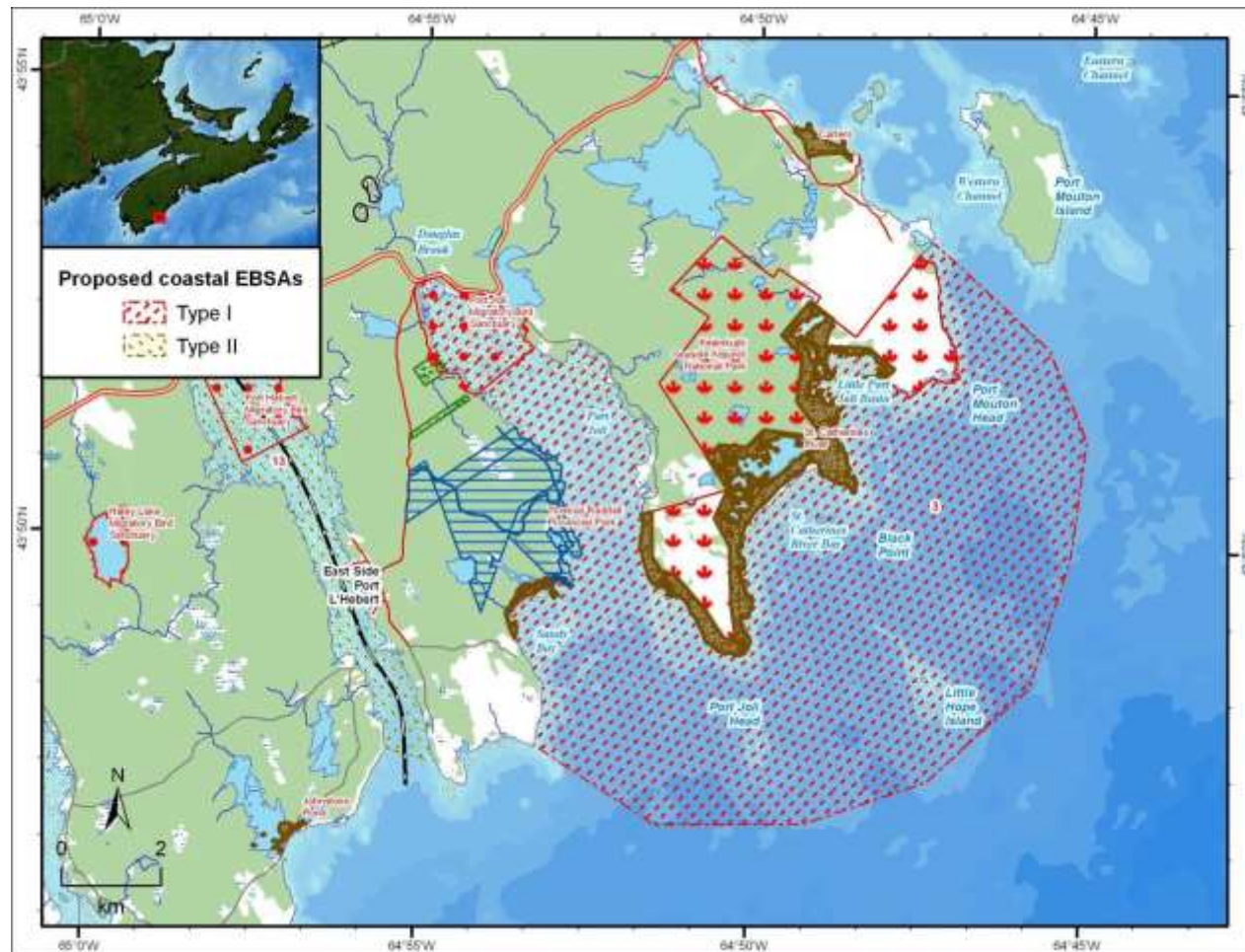
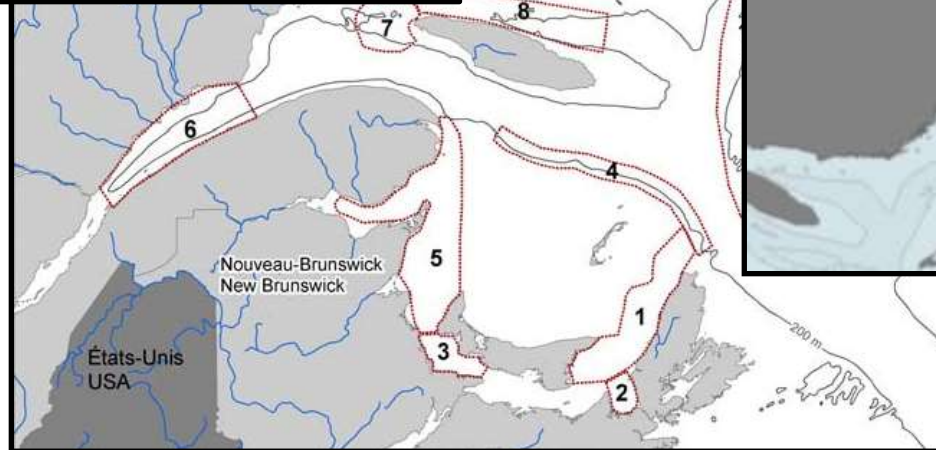
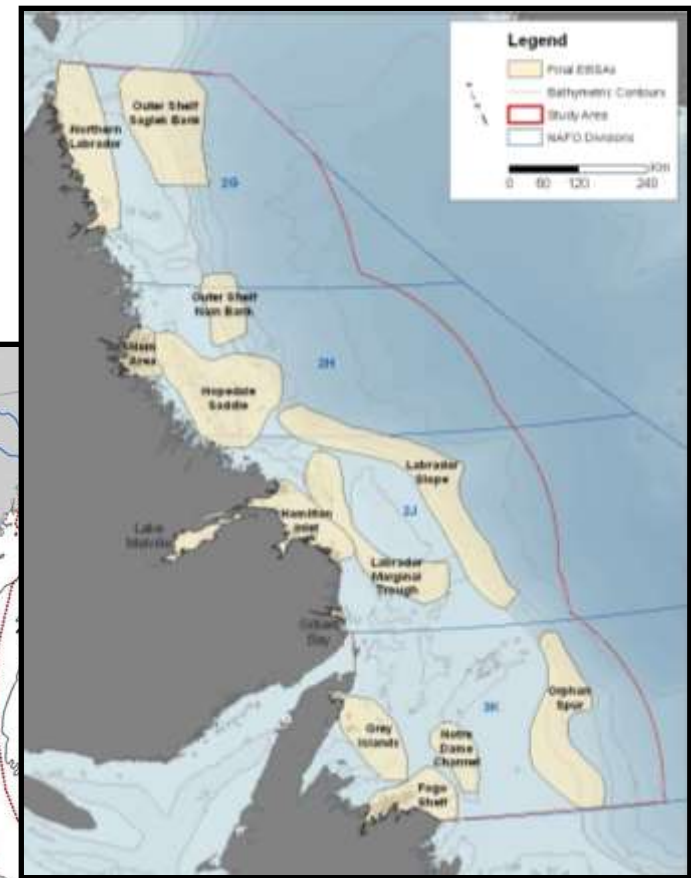
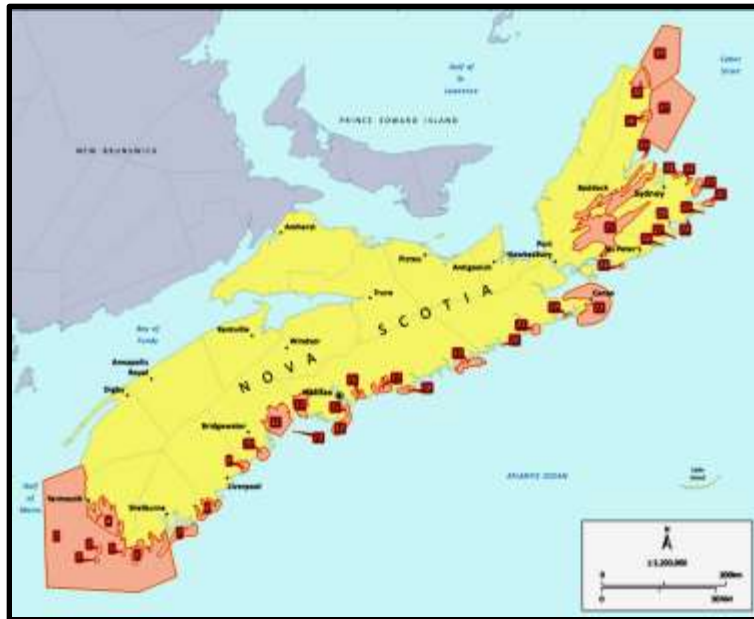


Figure 4.11 Location Map for Port Joli (Site #3). Basemap layers: land 1: 50 000, 1: 250 000 NTDB (NRCan); bathymetry S-57 charts (CHS); Restricted and Limited Use Land Database Layers (NSDNR 2006b). Refer to Figure 4.1 for legend.



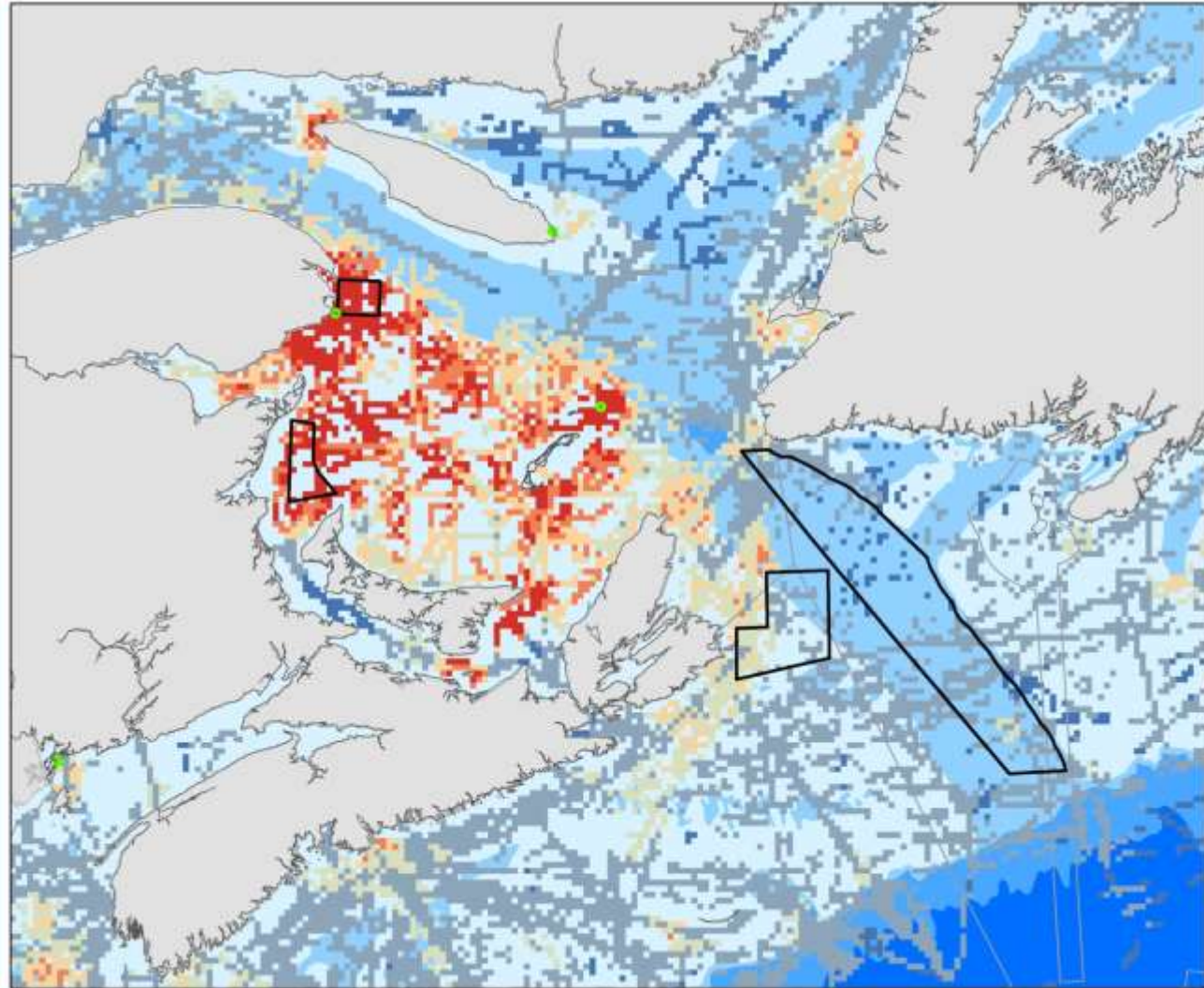
# Informed conservation planning



Port Joli, NS

# Responsible Marine Development

Gannets and DFO MPA Areas of Interest



# Summary

---

- CWS Technical Report in Preparation
- Data and information is being shared with partners.
- Data and map layers to be disseminated online.
- [Al.hanson@ec.gc.ca](mailto:Al.hanson@ec.gc.ca) for updates

