



Update May 2009

**Paul Boudreau
COINAtlantic Project Manager
ACZISC Secretariat**



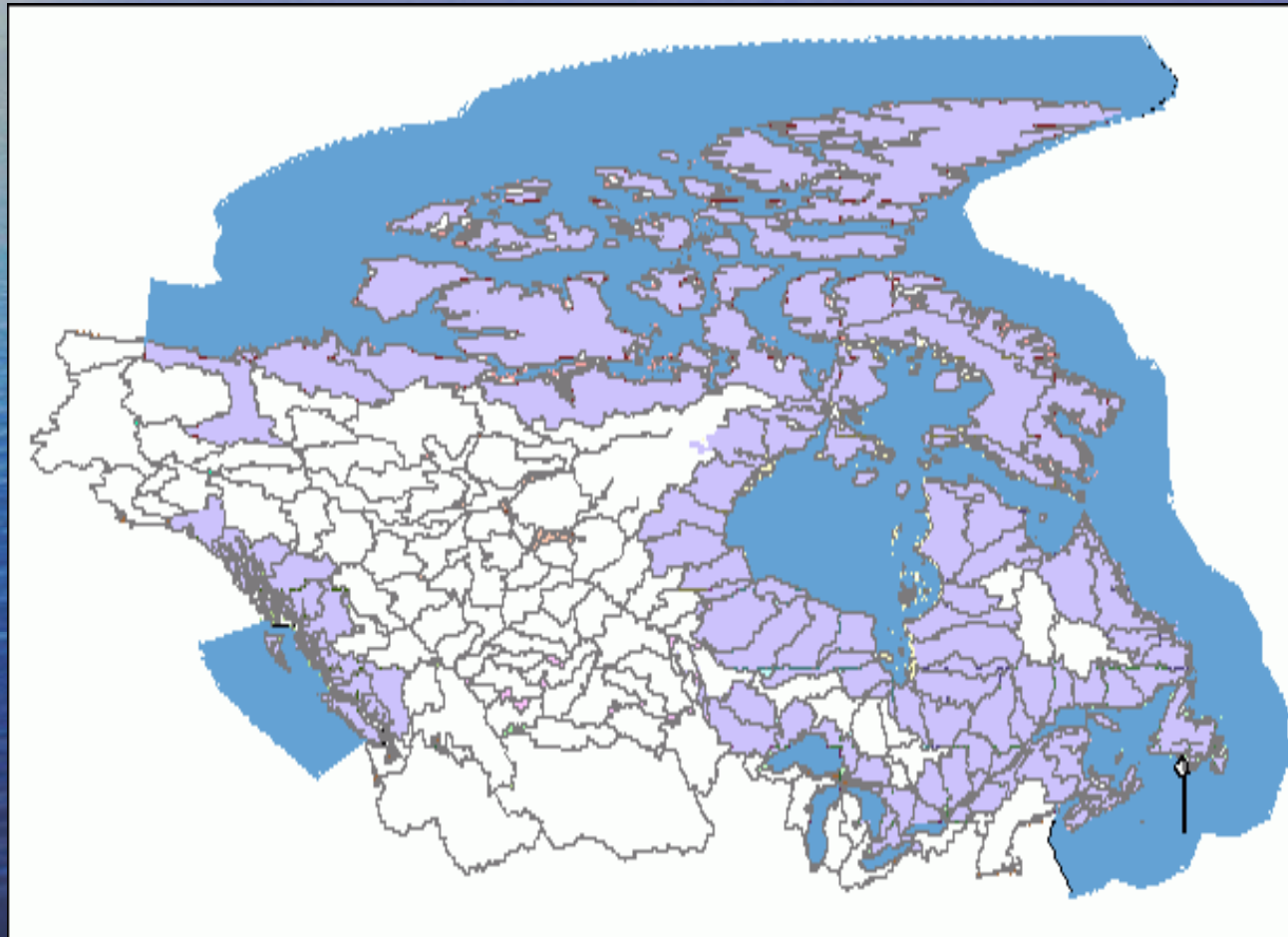
- Coastal and Ocean Information Network for Atlantic Canada
- Network of People, Information and Technology
- Working to support integrated coastal and ocean management (ICOM)

The ICOM Challenge

- Need information concerning land, freshwater and saltwater
- Need information concerning both environmental and socio-economic conditions
- Need to find and use information from many agencies, groups and individuals

Canada's Coastalshed

– land and water –
No one agency can do it all



What COINAtlantic is NOT

- Not a portal or a data warehouse
 - It doesn't house any data.
- Not a GIS or a refined mapping engine
 - It doesn't allow data manipulation or complex analysis.

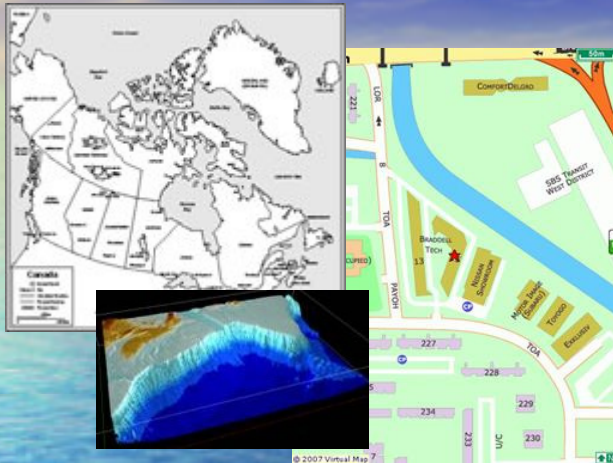
What COINAtlantic is

- COINAtlantic is a Utility or tool.
- COINAtlantic is a component of the Canadian Geospatial Data Infrastructure (CGDI).
- COINAtlantic is accessible via common web browsers (Internet Explorer and Firefox)
- COINAtlantic uses:
 - The established GeoConnections Discovery Portal (GDP) metadata catalogue
 - Established standards for map publishing (WMS / WFS)

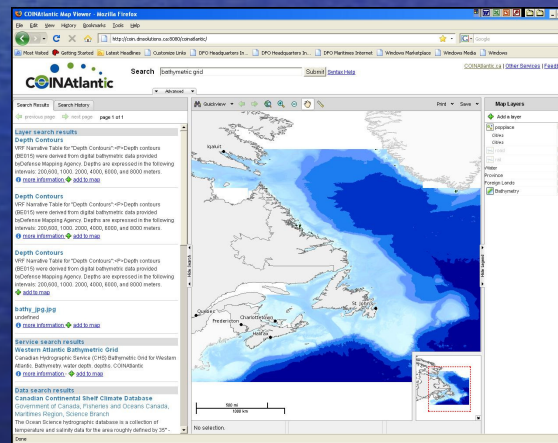
What COINAtlantic can do

- Search by text and geography
- Find any data registered on the GDP
- View available map images
- Overlay information from many sources
 - Land, coastal and marine
 - Federal, provincial, municipal, NGO, etc.
- Produce map images for publication in reports and other documents

COINAtlantic Approach: A Network of People, Information and Technology



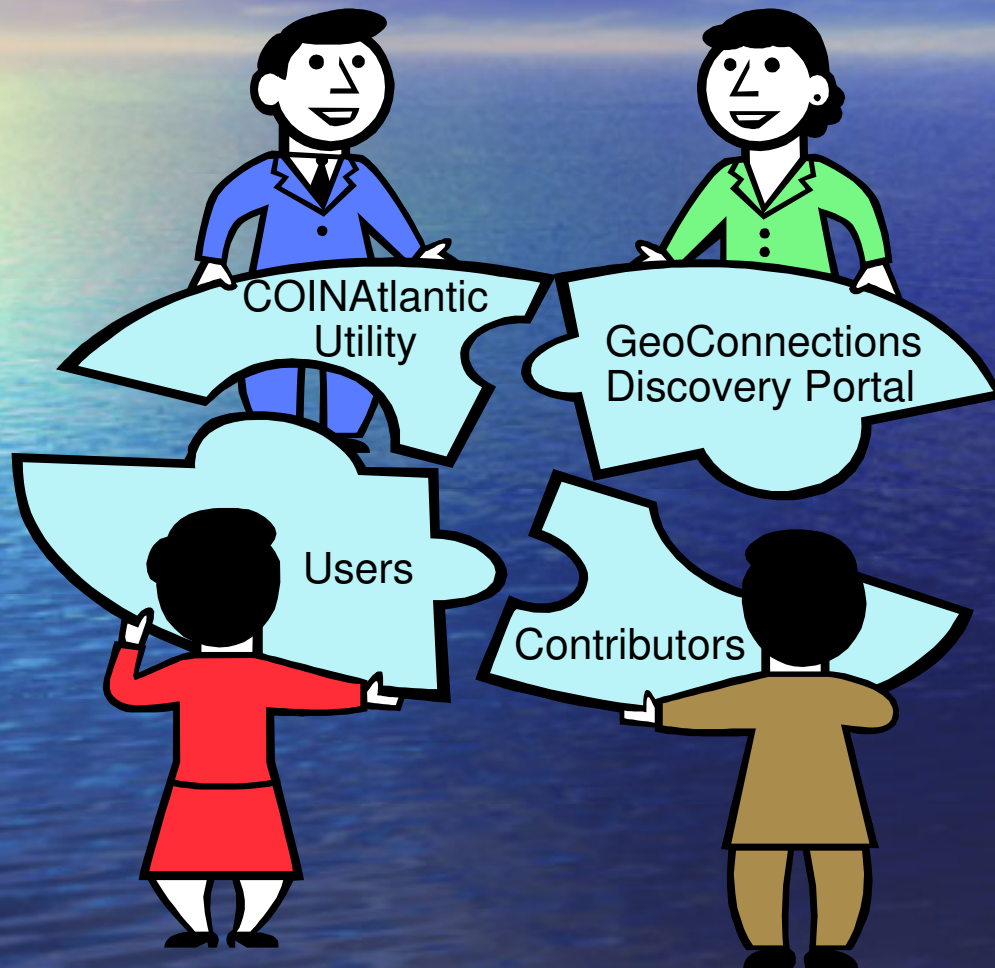
**People committed to
sharing information**



Users

**COINAtlantic
Utility via
common web
browsers**

Essentials



Data providers must:

- Publish data
- Register it on GDP
- Maintain and update

COINAtlantic Users must:

- Try it
- Learn how to use it
- Provide feedback
- Keep in touch

COINAtlantic in the Future

User

COINAtlantic User Interface

COINAtlantic Web Mapping Search Application

WMS/WFS Information Sources

Source 8
Source 7
Source 6
Source 5
Source 4

Currents
Land Use
Bathymetry

GDP (Metadata)

Applications

Etc
Source 5
Source 4
Source 3
Pollution
Coastal Flooding

Laws and Policy

Etc
Doc 3
Doc 2
Doc 1

Primary Publications

Etc
Pub. 3
Pub. 2
Pub. 1

Grey Literature

Etc
Pub. 3
Pub. 2
Pub. 1

Potential searches based on:

- Area of interest
- Issue to be addressed
- Data layers identified by User

COINAtlantic Utility Demo

The screenshot displays the COINAtlantic Map Viewer interface within a Mozilla Firefox browser window. The browser's address bar shows the URL <http://coin.dnsolutions.ca:8080/coinatlantic/>. The search bar contains the text "bathymetric grid".

The interface is divided into several sections:

- Search Results:** Shows "page 1 of 1" with navigation buttons for "previous page" and "next page".
- Layer search results:** Lists three "Depth Contours" entries, each with a description: "VFP Narrative Table for 'Depth Contours' -P-Depth contours (BE015) were derived from digital bathymetric data provided by Defense Mapping Agency. Depths are expressed in the following intervals: 200,600, 1000, 2000, 4000, 8000, and 8000 meters." Each entry includes a "more information" link and an "add to map" button.
- bathy.jpg.jpg:** An "undefined" image with a "more information" link and an "add to map" button.
- Service search results:** Includes "Western Atlantic Bathymetric Grid" and "Canadian Continental Shelf Climate Database".
- Data search results:** Includes "Canadian Continental Shelf Climate Database" and "The Ocean Science hydrographic database is a collection of temperature and salinity data for the area roughly defined by 35° -".

The central map area shows a bathymetric map of the Atlantic Ocean, with depth contours represented by shades of blue. Major cities like Quebec, Fredericton, Charlottetown, and Halifax are labeled. A scale bar indicates 500 miles and 1000 kilometers. An inset map shows the location of the main map area within the Atlantic Ocean.

The right-hand side features a "Map Layers" panel with a list of layers: "Add a layer", "place", "Cities", "Road", "Rail", "Water", "Province", "Foreign Lands", and "Bathymetry". The "Bathymetry" layer is currently selected and checked.

Available online from <http://COINAtlantic.ca>

Other Deliverables

- Introduction to Geomatics training
 - 9 sessions in Atlantic Canada
 - Curriculum developed for other opportunities
 - BoFEP Workshop, May 28th, Wolfville
- Third Party Evaluation
- Next Steps Workshop
- Funding Proposals under Development
- Tracking Records

Sample Tracking Record - April 2009

WMS URL	Layer Title	Count
http://gdr.ess.nrcan.gc.ca/wmsconnector/com.esri.wms.Esrimap/multibeam_bathymetry?SERVICE=WMS&		118
	<i>Natural Resources Multibeam Bathymetry Service</i>	
	<i>Yarmouth Harbour 2003, Gulf of Maine, offshore eastern Canada</i>	8
	<i>Bathymetry of Offshore Canada, derived from ETOPO2 and Canada 3D Data</i>	7
	<i>Halifax Harbour 1990 - 2002, Scotian Shelf, offshore eastern Canada</i>	6
http://142.176.62.108/cgi-bin/mapserv.exe?map=d:\\ms441oci\\maps\\NS_TOPO_10000.map&SERVICE=wms		37
	<i>GeoNova 1:10,000 Topographic data</i>	
	<i>NS_TOPO_10000</i>	9
http://bluefin.mar.dfo-mpo.gc.ca/wmsconnector/com.esri.wsit.WMSServlet/DFOgfs_SUMMER?SERVICE=WMS&STYLES=&		18
	<i>Department of Fisheries and Oceans, Science, Summer Groundfish Data</i>	
	<i>Melanostigma atlanticum [Atlantic soft pout: molasse atlantique]</i>	1
	<i>Gadus morhua [Atlantic cod: morue franche]</i>	2

Future ?

- GeoConnections Data Publishing
- COIN Marketing Study
- Windows-of-opportunity
- Outreach and training
- ACZISC Secretariat and member support



Keep in touch

- Email:
 - COINAtlantic@dal.ca
- Website: **<http://COINAtlantic.ca>**
 - COINAtlantic Utility
 - Video, tutorial and other support material
 - Link to FaceBook Group
 - This presentation