



# Gulf of St. Lawrence Integrated Management (GOSLIM) Plan

*Ecosystems Management*  
Oceans Division  
Fisheries and Oceans Canada





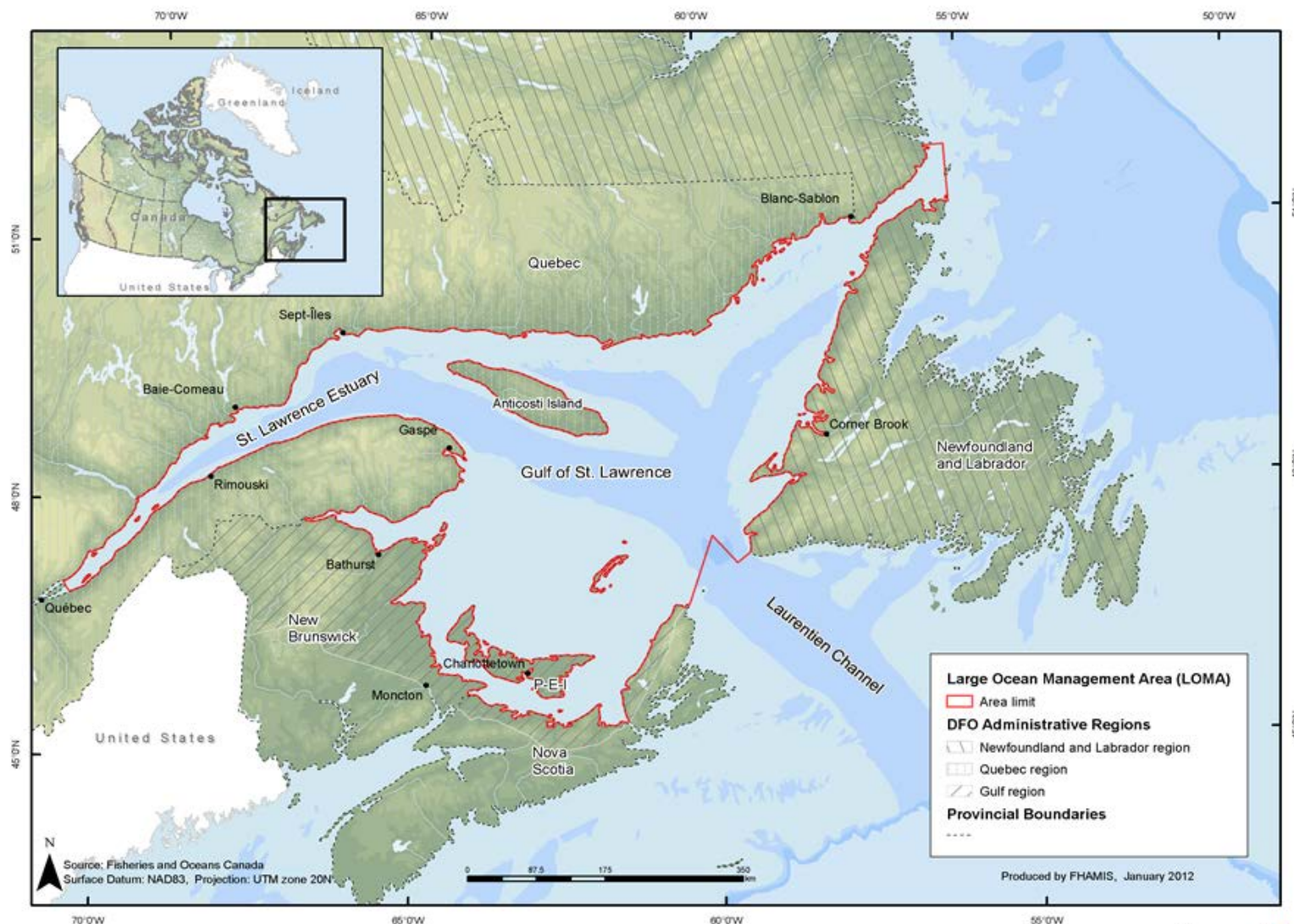
# GOSLIM Plan Objective and Goals

## Strategic objective:

*“Healthy and productive aquatic ecosystem to be achieved through effective management of the risk of environmental effects stemming from the various human activities and stressors that affect significant ecosystem components”*

## Goals:

- ✓ Establish the ecosystem basis for Gulf of St. Lawrence integrated management
- ✓ Provide a practical risk-based management approach in order to identify key management themes and manage potential adverse environmental effects
- ✓ Provide a framework toward priority management issues identification and action planning.



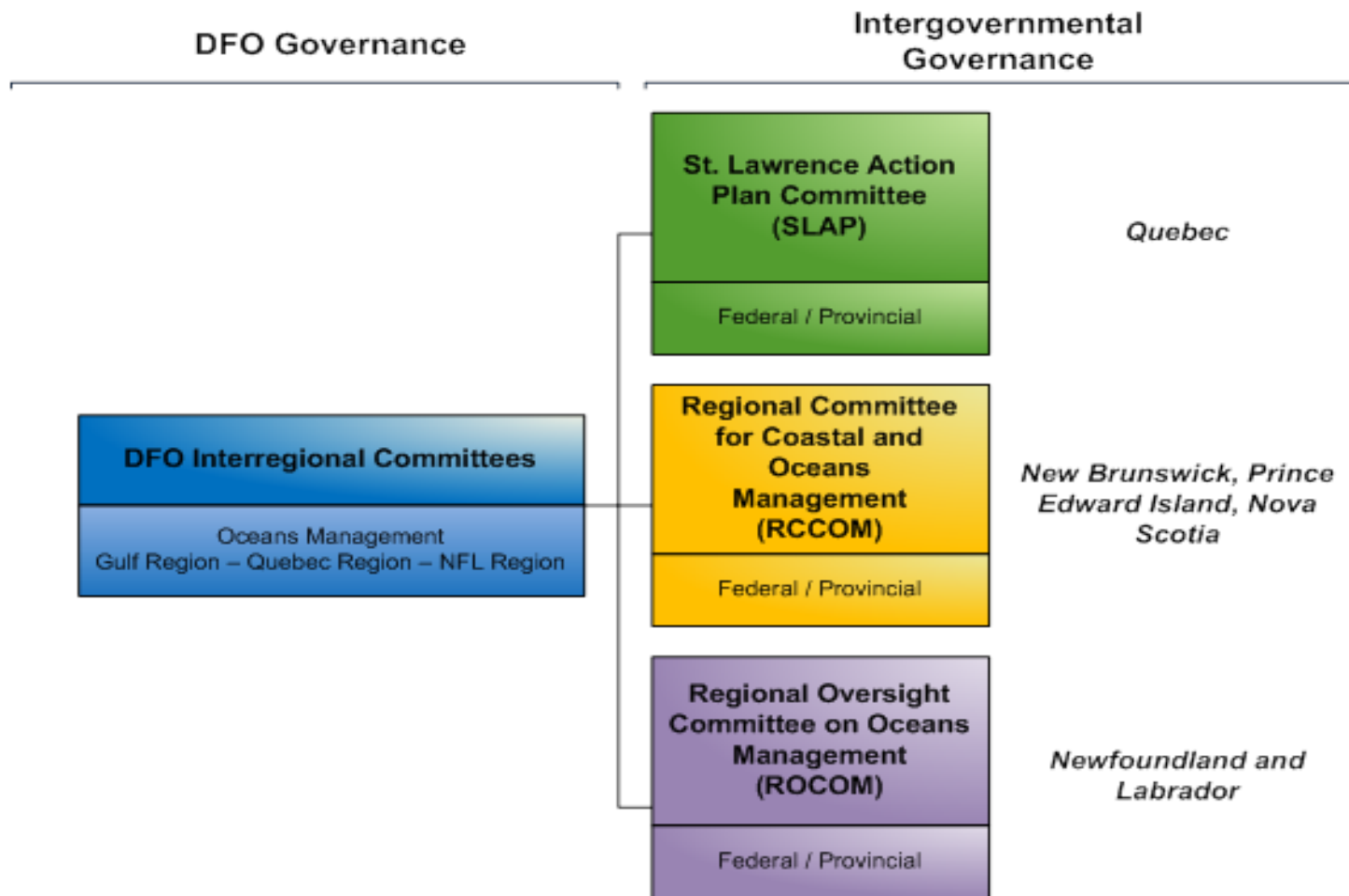


# Context

- One of the largest estuarine environments in North America with high biodiversity
- Increased intensity and diversity from ocean and coastal use
- Numerous regulatory authorities
- Using existing governance bodies, no new structure
  - A stakeholder advisory body encompassing all interested parties was never envisaged



# GOSLIM Governance





# A Different Approach

- Gulf of St. Lawrence Integrated Management process:
  - Primarily focused on DFO mandates
  - Review of the document by other federal departments, provincial governments and Aboriginal associations to provide an opportunity to include their respective priorities
  - Targeted engagement on specific issues will be conducted throughout the implementation phase
  - Implementation at Gulf-wide or regional scale depending on issues



# Management Themes

- Management themes identified by Fisheries and Oceans Canada
  - Groundfish and benthic invertebrates sensitive to fishing and physical changes to habitats (e.g. consequences of fishing gear)
  - Pelagic fish sensitive to fishing
  - Marine mammals sensitive to noise, entanglement, collisions with ships, and contaminants (e.g. marine transportation)
  - Marine plants sensitive to habitat changes caused by invasive species, contaminants and nutrient input
  - Corals and sponges sensitive to activities affecting the seabed
- Management themes identified by other federal and provincial departments
  - Marine and colonial birds
  - Marine and coastal environments with high levels of nutrients and sediment
  - Species at risk



# GOSLIM Plan Objectives

- Establish the ecosystem basis for integrated management of activities in the Gulf of St. Lawrence, as well as a framework and practical approach that enables:
  - Determine key management themes leading to the identification of priority issues and management actions;
  - Establish formal agreements on the actions to be implemented by all implicated federal and provincial regulatory authorities in a coordinated manner, utilizing existing governance structures;
  - Engage targeted stakeholders, including Aboriginal groups, industry associations, environmental and community groups and municipal governments to participate in the process of planning and implementing management measures identified jointly with implicated federal and provincial regulatory authorities; and
  - Implement management actions through the regulatory bodies with the authority to effect changes and at scales that are appropriate to the specific nature of the concern being addressed.





# Next Steps

- Implementation Phase
  - Priority Setting
  - Targeted Engagement of Regulatory Authorities
  - Regulatory Gap Analysis
  - Development and Implementation of Action Plans
- Action Plan Monitoring
  - Review and Evaluation